



THE BODY SHOP

The Body Shop **Sustainable Soy** Procurement Policy for suppliers

Approved in January 2024

1. Introduction

- **Sustainability targets/objectives:**

At The Body Shop, our sustainability vision calls for an approach to business that gives back more than it takes, including in our procurement activities. As part of our sustainability plans and targets, we recognise that some materials we use have significant social or environmental concerns. We therefore aim for full traceability and/or certification of our critical supply chains (palm, soy, ethanol, mica, cotton, and paper) by end of 2025.

We are also committed to join initiatives to prevent sourcing from deforested or converted natural landscapes.

- **Key social and environmental risks:**

The Body Shop considers soy as a high sustainability risk material considering links to deforestation in the Amazon, destruction of Cerrado and other high biodiversity grasslands, displacement of small farmers and indigenous communities, and carbon emissions and water impacts from agrochemical use.

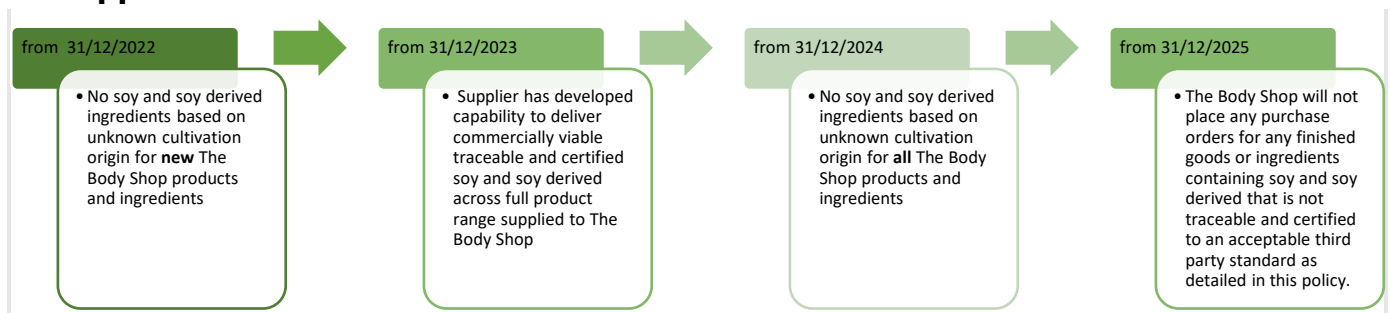
- **Scope:**

The Body Shop uses soy primarily as a feedstock in cosmetic ingredients, including surfactants and emollients (glycerine, SLS, SLES) as well as other soy derivatives such as tocopherol. All proposed sources of soy and soy-derived materials supplied to The Body Shop must meet the sustainability requirements set out below. These requirements will be applied in The Body Shop tender, supplier, and material approval processes, and are applicable to all soy and soy derived used in goods for resale or indirectly, whether manufactured internally or by third parties. Should we find that any purchased goods or materials do not meet these requirements, we will engage the supplier to change practices and/or reevaluate our relationship with them.

- **Traceability and certification requirements in brief:**

All The Body Shop suppliers must provide accurate information on the geographic origin of soy (country of cultivation) for all soy and soy derived ingredients in scope. All soy and soy derived sourced from elevated risk origins must be physically certified to an acceptable third-party standard by end of 2025 described in the Appendix 2. All soy and soy derived ingredients supplied to The Body Shop must be also GMO free.

- **Supplier milestones:**





THE BODY SHOP

2. Detailed Requirements

- **Traceability**

All The Body Shop suppliers of products and ingredients containing soy must provide (at a minimum) accurate information on country/ies of soy cultivation for the materials supplied, as part of The Body Shop tenders, supplier, product and ingredient approval procedures and annual reporting. Failure to provide accurate and timely traceability information on request may result in rejection.

- **Elevated risk origins**

Some countries have been identified as having elevated risk for recent land conversion (deforestation or destruction of high biodiversity value grasslands) for the purposes of soy cultivation. These countries are listed in **Appendix 1**. The list may be subject to change. Soy or soy derivatives to The Body Shop with elevated risk origins must achieve relevant third-party physical certification as per Appendix 2 from 31/12/2025 for all materials supplied to The Body Shop.

- **Certification requirements**

All The Body Shop suppliers must provide valid evidence for the applicable third-party certification standard for the soy and soy derived materials supplied, and (where applicable) supplier chain of custody, in the format required by The Body Shop. Acceptable certification standards are detailed in **Appendix 2**.

- **Unacceptable sources of soy**

Suppliers with no capability to deliver commercially viable traceable, certified soy and soy derived ingredients and finished goods, as per the requirements of this policy, will not be used to supply soy and soy derived ingredients or finished goods to The Body Shop after 31/12/2025. Any suppliers found to be involved in human rights violations, environmentally destructive practices specially deforestation, or otherwise violating The Body Shop Global Supplier Code of Conduct may be exited.

- **GMO free requirement – The Body Shop**

Please note that The Body Shop has a GMO-free requirement for all ingredients, including soy and soy-derived ingredients. Ingredients that do not meet this requirement will not be approved by The Body Shop for manufacture of The Body Shop products.

3. Collaboration and contact

Above and beyond these requirements, we encourage you and your suppliers to participate in and support collaborations to ensure that poor labour conditions and environmental damage in particular deforestation and habitat conversation are eliminated from soy supply chains. We also expect support from suppliers to help us meet The Body Shop commitment to become Net Zero by 2050 and set a carbon reduction pathway in line with the SBTi requirements. We further encourage our suppliers to come forward with proposals for more traceable, sustainable and regenerative soy-based ingredients and finished goods that we can use in our business.

For further information on this policy, possible exceptions and The Body Shop plans to achieve 100% traceable and /or certified soy by 2025, please contact

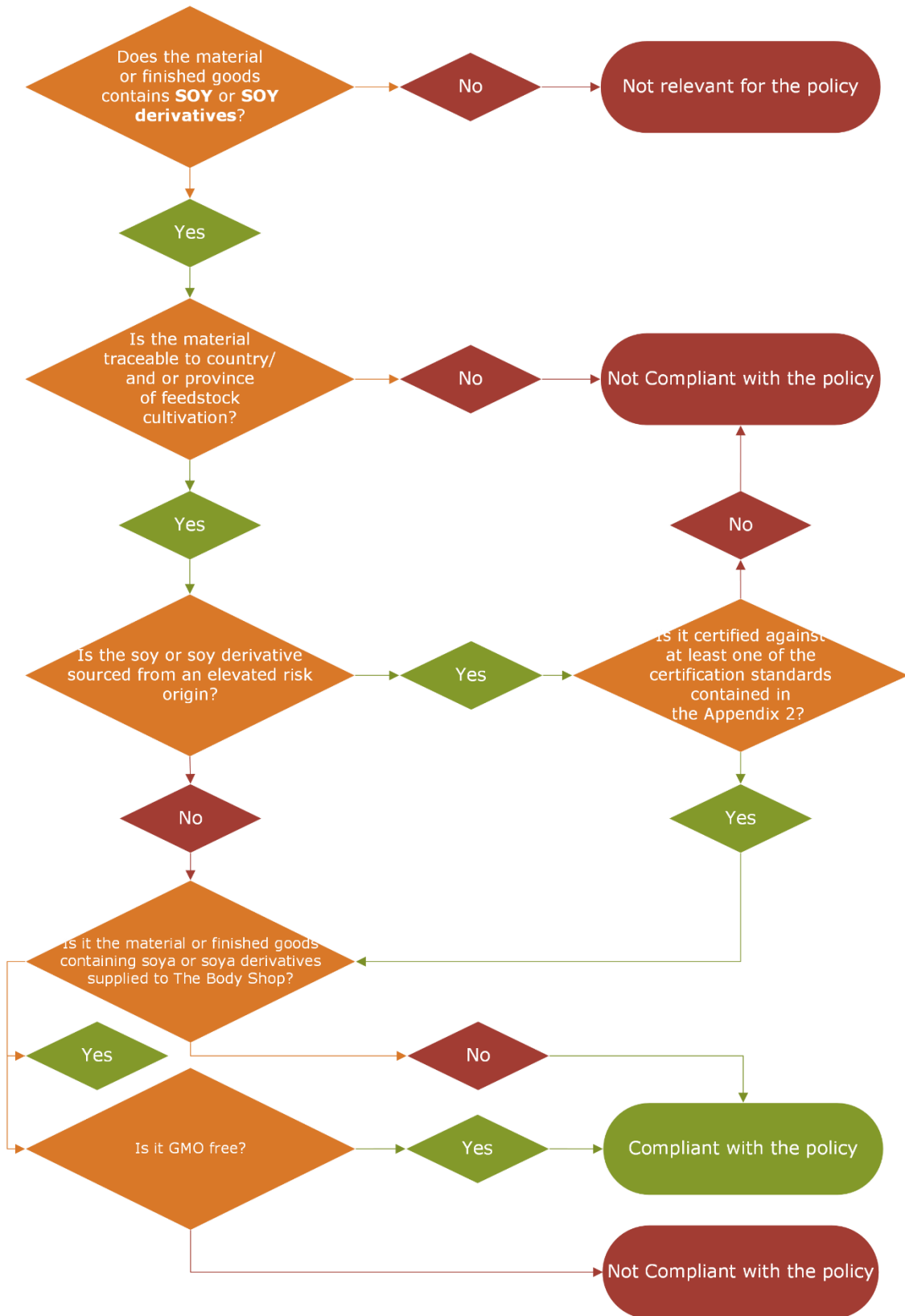
critical.materials@thebodyshop.com.



THE BODY SHOP

Appendix 1

Flow chart – requirements for soy containing ingredients and finished goods.





THE BODY SHOP

Appendix 2

- **Elevated risk origin countries for soy¹**

Country
Brazil
Argentina
Paraguay
Uruguay

Appendix 3

- **Acceptable certification for ingredients supplied to The Body Shop**

With immediate effect no later than 31/12/2025 for the remaining, ingredients containing soy and soy derived sourced from elevated risk origins supplied to The Body Shop must be physically certified to at least one of the third-party standards mentioned in the certifications table below.

Additional third-party standards may be added to this list if they provide acceptable levels of traceability, social and environmental sustainability assurance in soy supply chains.

¹ Based on Global Forest Watch and World Wildlife Fund (WWF) monitoring and reports.



THE BODY SHOP

Certification name	Certification abbreviation	Certification description
Fair For Life	FFL	An international, voluntary standard that sets requirements for third-party certification of fair trade and organic input and chain of custody.
Regenerative Organic Certified	ROC	An international, non-profit, non-governmental organization, voluntary standard that sets requirements for third-party certification of certified organic for food, textiles, and personal care ingredients
ProTerra Foundation	ProTerra	An international, non-profit, non-governmental organization with long-standing history and experience in promoting sustainability in the food and feed supply chain and segregated non-GMO materials.
Round Table on Responsible Soy Segregated	RTRS SG	RTRS is a member-based multi-stakeholder platform that focuses on creating sustainable soy supply chains. With this certification, operators can guarantee that soy from one or more RTRS-certified facilities is kept physically separate from other sources of non-RTRS-certified soy across the entire supply chain.
Round Table on Responsible Soy Mass Balance	RTRS MB	RTRS is a member-based multi-stakeholder platform that focuses on creating sustainable soy supply chains. Allows to maintain separate accounting systems, through which ensure that the delivered volumes of RTRS-certified soy or derived products correspond to the volumes of RTRS-certified soy or derived products sourced.
Donau and Europe Soy	Donau Soja	The Donau Soy Association administers two Standards – the Donau and Europe Soy Standards. All producers are in Europe and are non-GMO.
International Sustainability & Carbon Certification	ISCC Plus	ISCC is a global standard applicable to feedstocks for agriculture, biomass, and forestry sectors for the biofuels markets. ISCC Plus is an add on that extends certification to food, feed, and technical/chemical applications.
Fairtrade International	FI	Certification that aims to ensure a set of ethical standards met in the production and supply of a product or ingredient.

- **Use of credits**

In situation where soya is sourced from a low-risk origin, and/or in limited situations where physically certified soya is not available, The Body Shop may purchase (or require the supplier to purchase) certified sustainable soy credits through an acceptable credit trading system.